

VISUAL STORY

cdpKids

www.cdp.com.au

THE PRODUCTION

The 13-Storey Treehouse is presented by CDP Kids. It's a play by Richard Tulloch adapted from the books by Andy Griffiths & Terry Denton.

Length

The show is approximately 60 minutes with no interval.

Age Recommendation

Suitable for ages 6+. Families are encouraged to review warnings, in order to assess appropriateness of content.

Photography

Production Stills by Heidrun Lohr.

Content Warnings

- At the start of the show, Andy and Terry use torches with bright lights to see where they are going when the lights are off. When they are finding their way, sometimes the lights shine into the audience. It only lasts for a little while and you can cover your eyes if it's too bright.
- At some moments the lighting on stage will be dimmed and the stage will be a little darker. There will also be some flashing lights to create effects like when the 2D 3D converter is turned on.
- During the show, there are sometimes loud noises, like when Mermadia turns into a sea monster, and when the giant gorilla appears. It only lasts for a little while and you can cover your ears if it's too loud.

THE THEATRE

The 13-Storey Treehouse is a play that is being performed at different theatres in Australia.

The team travel all around the country on a tour. They stop in different towns and cities to perform the show for the audiences that live nearby.



What theatre are you watching The 13-Storey Treehouse at?

Do you know what the theatre building looks like?

Arriving at the Theatre

When you arrive at the theatre, there may be lots of other people in the foyer area. They are there to see the show just like you!

You will also see some staff members who work at the theatre. They can help you with directions and any questions that you have about the performance.

Before the Show

To see the show, you will need a ticket. You may already have your ticket, or you may need to collect them from the Box Office.

There may be a queue of people who are also waiting to collect their tickets.

Before you go inside the auditorium, you may also want to get something to eat or drink or use the toilet.

When the performers are ready, the staff members will open the doors to the auditorium so that you can find your seat before the show starts. They will ask you to show them your ticket, which will tell you which seat you are sitting in for the play. The staff members can help you find your seat.

Inside the Auditorium

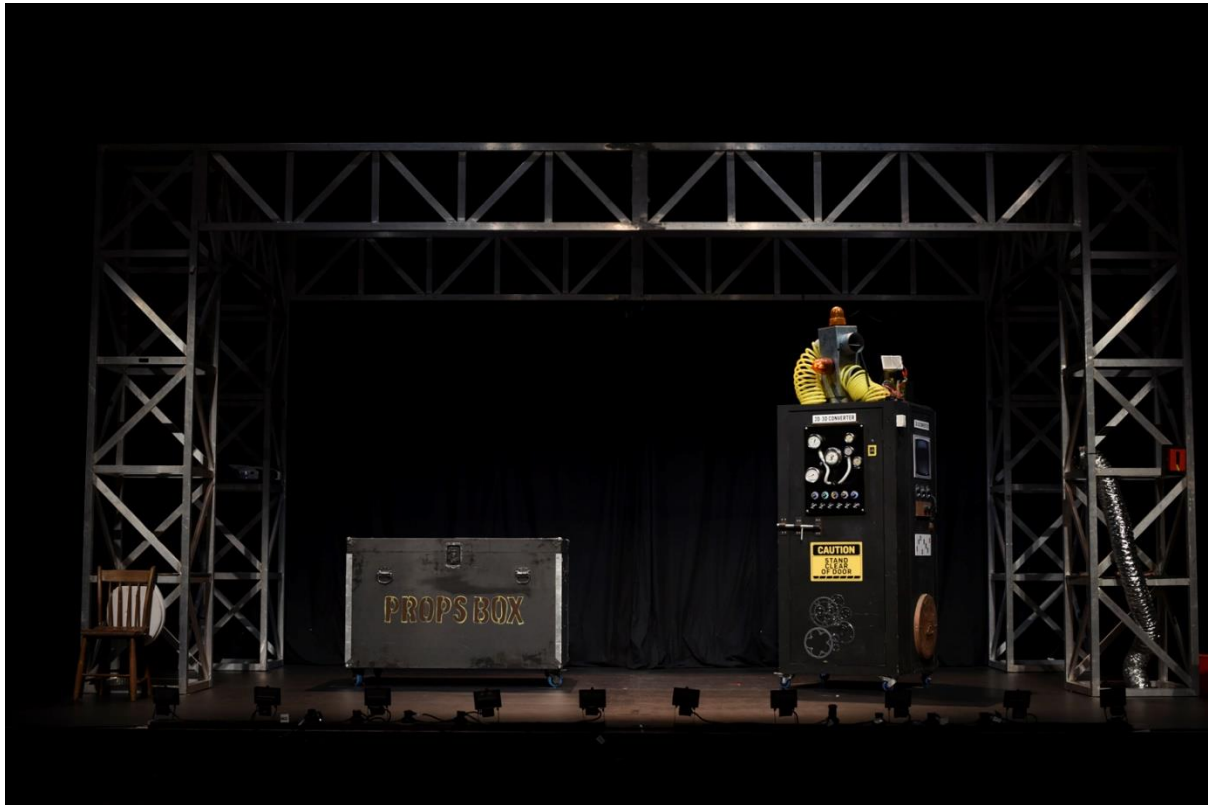
Every theatre auditorium looks little bit different. In some theatres everyone is sat on the same level, and in other theatres there are seats on different floors. You might need to walk up or down some stairs to get to your seat.

How many levels does your theatre have?

The Set

When you go into the auditorium you will see the set on the stage.

The set looks a bit like a big factory workshop.



During the Show

The play will last approximately 60 minutes and has no interval.

During the show, if it gets too loud, you can cover your ears.

When the show starts, it will be time to be quiet so that you can hear everything.

The lights will turn down in the audience, but the stage will stay bright so that you can see everything.

If you need to take a break that's ok. You can leave the auditorium and find a place to sit in the foyer if you'd like. You can return to the auditorium whenever you are ready.

After the Show

When the show is finished, people will clap to say thank you to the performers.

If it's too loud you can cover your ears with your hands.

THE PLAY

This play is called **The 13-Storey Treehouse** and the story comes from a book with the same name. It is the story of Andy and Terry who live in the Treehouse. They are supposed to be putting on a show but they arrive at the theatre a week late and they haven't even written the script yet!

If you have read the book, you might spot some differences between the book and the play.

3 actors play different characters to tell the story.

Acting is fun! And often playing characters quite different to ourselves can be SO much fun!

The actors in **The 13-Storey Treehouse** are having a lot of fun playing roles that are very different to themselves.



THE CHARACTERS

The characters that we will meet are:



Andy

Andy is the first person we meet. He is the writer, and slightly more organised than Terry. Most of the time.

Terry

Terry likes to dream and invent things, which can sometimes be brilliant!

And can sometimes go really, *really* wrong.





Val

Val is the stage manager.

She is highly professional and helps Andy and Terry get their show up and running.

You will also meet:

Bill the Postman, who delivers the Treehouse post.

Mermadia, who begins as a mermaid but turns into a sea monster!

Mr Big Nose, who is Andy and Terry's publisher, and **Barky the Barking Dog**, who is a puppet!

THE STORY



LATE FOR REHEARSAL

Andy and Terry arrive at the theatre ready to start rehearsals for their new show, but all of the lights are switched off.

They find the light switch and see that everyone is sitting in the auditorium already. Oh no! They are a week late and the show is today!

The stage goes darker, then Andy and Terry use torches so that they can find their way around the stage. It only lasts for a little while before Terry finds the light switch.

Val says “the show must go on” and agrees to help them. They don’t have any props though, so everyone will need to use their imaginations.



THE 2D 3D CONVERTER

Val let's Andy and Terry use the 2D 3D converter so that they can make some props – it turns 2D drawings into 3D objects!

Andy and Terry have a drawing competition and Terry wins – he's *much* better at drawing than Andy. They put Terry's drawing of a banana into the 2D 3D converter and it turns in a giant real life banana.

When they switch the 2D 3D converter on the stage goes darker and there are some flashing lights and loud noises. It only lasts a while and if it's too loud you can cover your ears.



BARKY THE BARKING DOG

Barky the Barking Dog is Terry's favourite TV show.

When Terry watches an episode, the screen is bright and the rest of the stage goes dark. It only lasts for a little while, and if the screen is too bright you can cover your eyes.

In the episode Barky falls down a hole! But he's ok and it's very funny.



MERMADIA

Bill the Postman delivers the sea monkeys that Terry has ordered.

They take them down to the secret underground laboratory and feed them with the special sea monkey food.

One of the sea monkeys starts to grow much quicker than the rest. Oh no! It isn't a sea monkey at all – it's a mermaid called Mermadia!

She tells Terry that if they get married he will turn into a merman, but it's a trick! Mermadia turns into a sea monster!

She might seem a bit scary and there are some loud noises when Mermadia chases Andy and Terry. It's ok though, it's just Val pretending, and you can cover your ears if it's too loud.

To defeat Mermadia, Andy and Terry put her in the 2D 3D converter and set it to reverse. She comes out as a picture and they flush her down the toilet.

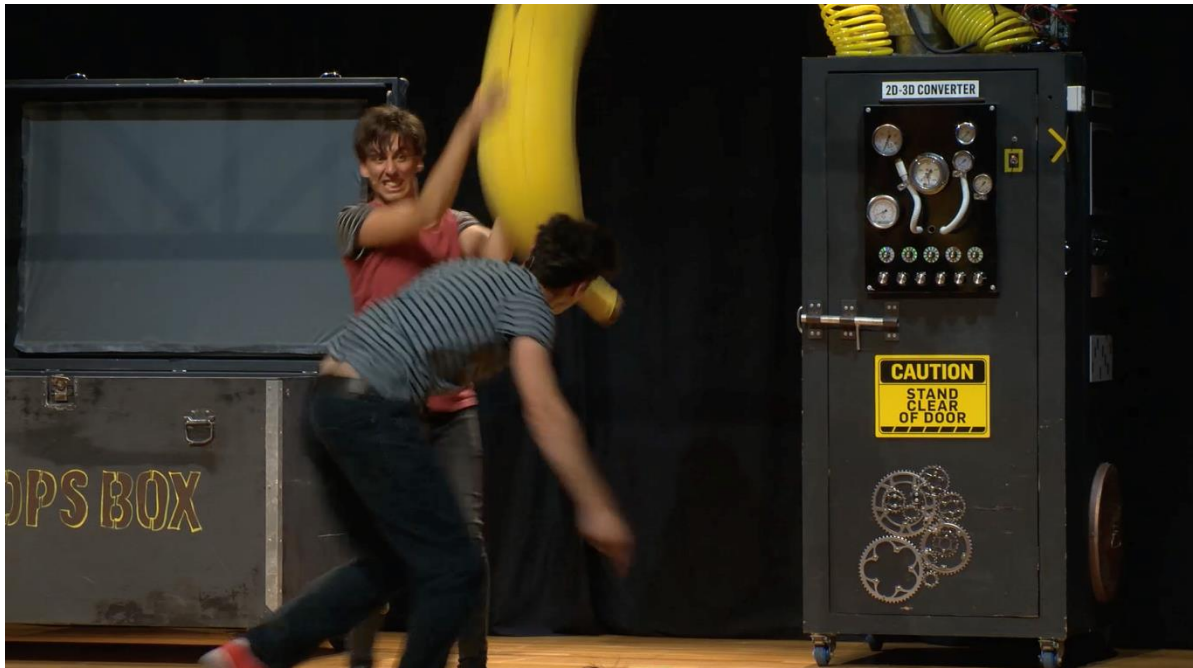


SUPERFINGER

Even though she turned out to be a sea monster, Terry is upset that Mermadia is gone so Andy tries to cheer him up.

They put Terry's self-portrait of his finger in the 2D 3D converter and it turns into Superfinger!

There are lots of situations where Superfinger can save the day!



HUNDREDS OF MONKEYS

Bill the Postman delivers more sea monkeys but this time they turn into hundreds of real monkeys!

The monkeys are causing havoc in the Treehouse and so Andy and Terry try whacking them with the giant bananas.

That doesn't work but Andy realises that the bananas can hypnotise the monkeys. They even hypnotise Terry!

Andy carries them on the banana on his back and lures all of the monkeys onto a giant catapult. He flings them very far away.



GIANT GORILLA

The monkeys are all gone – phew!

But the treehouse starts shaking and swaying. What could it be?

Oh no! A giant gorilla is staring through the window of the Treehouse. He wants bananas!

The gorilla is very big so he might seem a bit scary, but don't worry, Andy and Terry will find a way to defeat him soon enough.



BROKEN 2D 3D CONVERTER

Andy and Terry defeat the giant gorilla but lots of things in the Treehouse got destroyed.

Val is very upset that the 2D 3D converter is broken because it was a very expensive piece of equipment. She says she might lose her job!

It's ok though – they realise that they can make a show about everything that just happened to them. Mr Big Nose will be so happy that he'll pay for everything to be repaired.

Val even agrees to go on tour with Andy and Terry and their new show!

*We hope you enjoy your visit to
The 13-Storey Treehouse!*



www.cdp.com.au